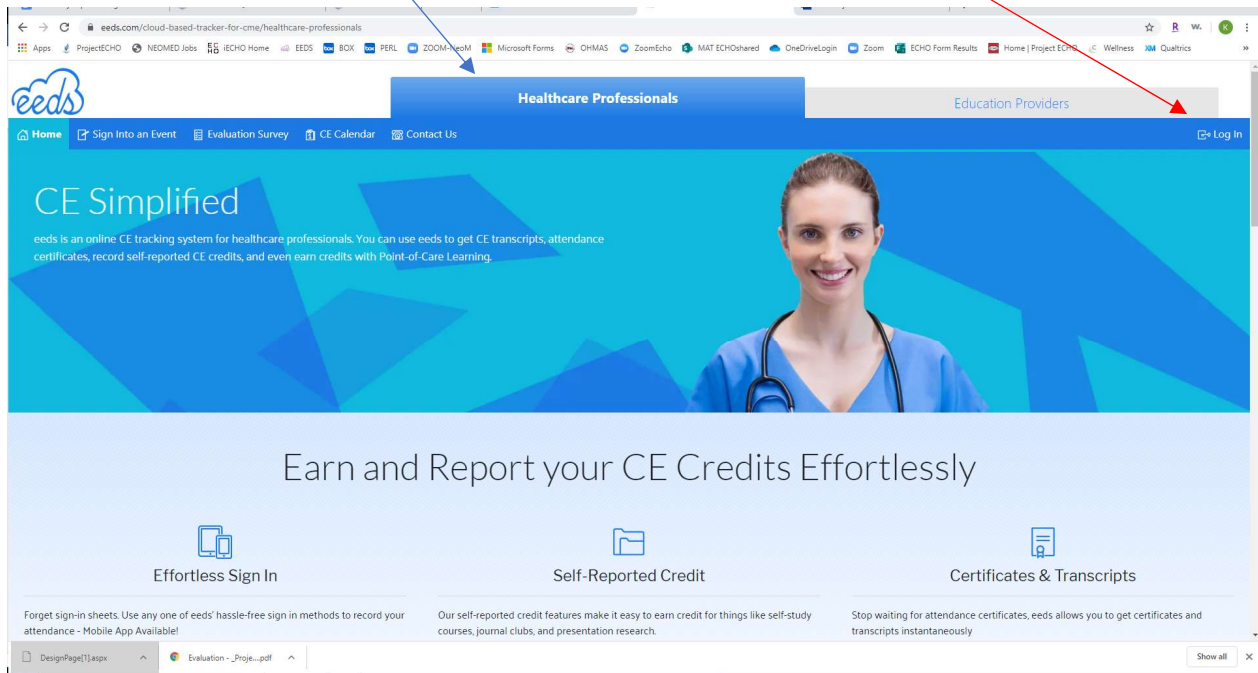


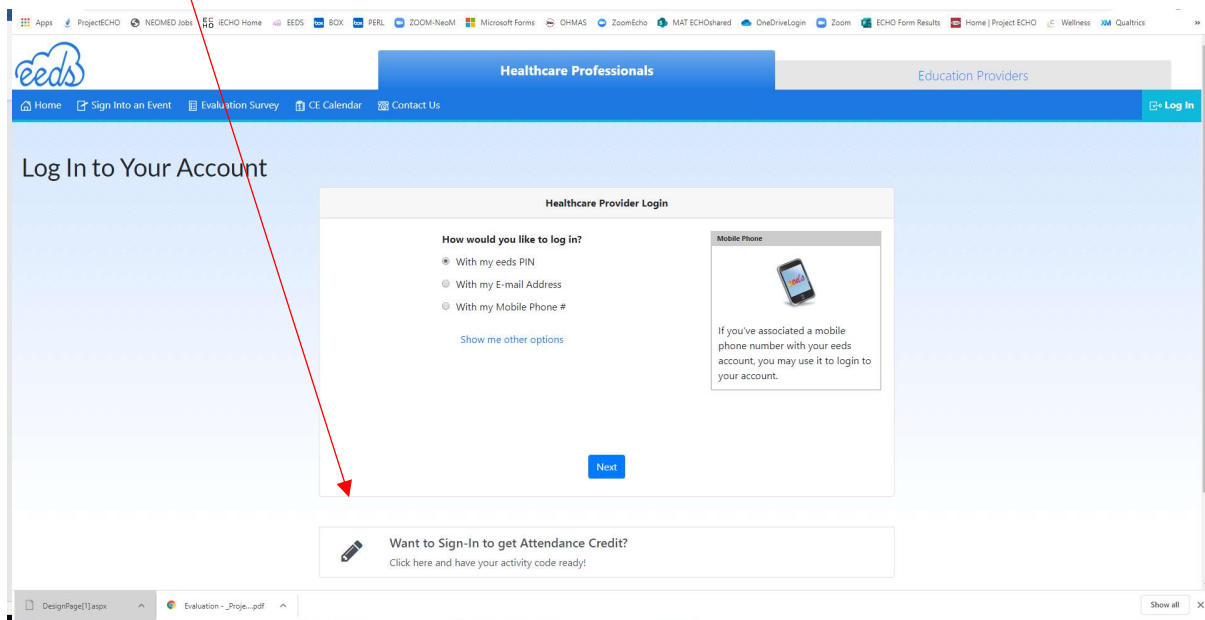
Claiming Continuing Education Credit for NEOMED ECHO Programs

NEOMED uses www.eeds.com to apply for and track CEU/CME. It is a user-friendly electronic method that replaces the need for paper sign in sheets and evaluations. You may also sign in from your smart phone. **You must sign in to EEDs and complete an evaluation to receive CME/CEU.**

1. Go to “Healthcare Professionals” tab at www.eeds.com. Click **Log In**.



2. Sign in to “Want to Sign-in to get Attendance Credit?” You’ll need the 6-digit code from the session you just attended.





Log In



Home



**Sign-In to
Educational Event**



Online Evaluations



CE Calendar



Contact Us

Sign-In to Educational Event

Step 1 of 3: Enter Activity Code

Enter the 6 character activity code provided to you by your activity coordinator or speaker.

Next

- Enter in the **Activity Code**.
 - This will be provided during each session.
 - ***This activity code is only active for 24 hours.***
- Fill out the requested information as it pertains to you - your contact information, specialty and credentials and a short survey.
- You will need to sign in individually receive the **CME/CEU** credit for each training session you attend.
- At the end of each session, you will receive an electronic evaluation to fill out.
- For any additional questions, please contact NEOMEDECHO@neomed.edu.

CREATING AN EEDs ACCOUNT WITHOUT AN EVENT CODE

To set up an EEDs account, visit https://www.eeds.com/hp_signup.aspx?sub=false.

Create Free eeds Account

After you've entered your information, it will be reviewed within 24 business hours and an email will be sent with instructions for logging into your account.

What is your degree/certification? ⓘ

MD ▾

Practice Address?

USA ▾

What is your practice's zip code?

Are you a Resident Physician?

No ▾

Are you a member of the AAFP?

No ▾

[Next](#)



Want to Sign-In to get Attendance Credit?

[Click here](#) and have your activity code ready!